



B-303 Bar Wrapped Concrete Cylinder Pipe (AWWA C303) (U.S.)

B-303

Bar-wrapped pipe produced in accordance with AWWA C303 standards

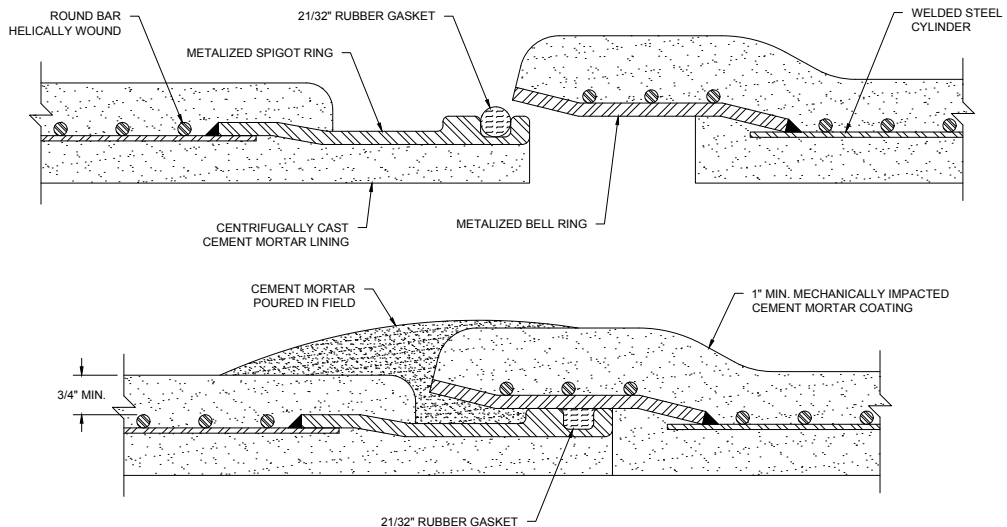
Thompson Pipe Group Pressure's Bar-Wrapped Pipe combines the physical strength of steel with the structural and protective properties of high strength cement mortar. A round, mild steel bar is helically wound around the steel cylinder and all surfaces are encased in portland cement mortar. This composite pipe reacts as a unit when resisting internal pressure and external loads.

The conservative basis of design provides a safety factor comparable to other waterworks pipe materials for normal service conditions and surge or water hammer. The stress in the steel components at working pressure is limited to one half the yield strength of the steel.

NOTE: *Availability of diameters and laying lengths varies by location. Contact your sales representative for more information.

JOINT CLOSURE: TPG Pressure's circular O-ring gasket provides a highly dependable positive joint seal. Made of high-quality synthetic rubber, extruded to exacting tolerances and measured volumetrically, the gasket fits within an accurately shaped spigot groove.

AWWA C303 Pipe Data Sheet (For pipe made in U.S.)								
inside pipe diameter*	lining thickness	max. outside diameter at bell	weight per lineal foot	standard laying length*	joint depth (TX)	maximum deflection angle (TX)	joint depth (FL)	maximum deflection angle (FL)
10"	1/2"	14 1/2"	75#	20' - 40'	3 1/2"	3.62°	n/a	n/a
12"	1/2"	16 1/2"	88#	20' - 40'	3 1/2"	3.1°	n/a	n/a
14"	1/2"	18 1/2"	100#	20' - 40'	3 1/2"	2.73°	n/a	n/a
16"	1/2"	20 1/2"	110#	20' - 40'	3 1/2"	2.4°	n/a	n/a
18"	3/4"	23"	140#	20' - 40'	3 1/2"	2.12°	4 1/2"	4.93°
20"	3/4"	25"	155#	20' - 40'	3 1/2"	1.93°	4 1/2"	4.49°
24"	3/4"	29"	185#	20' - 40'	3 3/4"	1.63°	4 1/2"	3.81°
27"	3/4"	32"	220#	20' - 40'	3 3/4"	1.47°	n/a	n/a
30"	3/4"	35"	245#	20' - 40'	3 3/4"	1.33°	4 1/2"	3.09°
33"	3/4"	38"	280#	20' - 40'	3 3/4"	1.22°	n/a	n/a
36"	3/4"	41"	315#	20' - 40'	3 3/4"	1.12°	4 1/2"	2.61°
39"	3/4"	44"	345#	20' - 40'	3 3/4"	1.03°	n/a	n/a
42"	3/4"	47"	375#	20' - 40'	3 3/4"	0.97°	4 1/2"	2.26°
45"	3/4"	50"	415#	20' - 40'	3 3/4"	0.9°	n/a	n/a
48"	3/4"	53"	469#	20' - 40'	3 3/4"	0.85°	4 1/2"	1.99°
53"	3/4"	58"	512#	20' - 40'	3 3/4"	0.77°	n/a	n/a
54"	3/4"	59"	519#	20' - 40'	3 3/4"	0.77°	5 1/8"	1.90°
57"	3/4"	62"	538#	20' - 40'	3 3/4"	0.72°	n/a	n/a
60"	3/4"	65"	554#	20' - 40'	3 3/4"	0.69°	5 1/4"	1.84°
64"	3/4"	69"	613#	20' - 40'	3 3/4"	0.65°	n/a	n/a
66"	3/4"	71"	672#	20' - 40'	3 3/4"	0.63°	n/a	n/a
72"	3/4"	77"	735#	20' - 40'	3 3/4"	0.58°	n/a	n/a



Rev. 12/2020