

TRENCHLESS PIPE

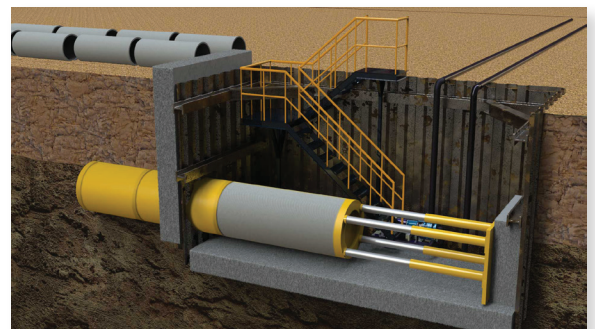


WHY TRENCHLESS?

To minimize disruption to surface traffic, above-ground structures, business and general activities, trenchless applications are a logical solution. Thompson Pipe Group has built the largest offering of trenchless product solutions in the industry.

FREQUENTLY ASKED QUESTIONS

Trenchless installations are less disruptive to the environment, and commercial and residential operations.



What's your experience with trenchless?

Thompson Pipe Group has produced trenchless pipe for some of the largest water projects in North America.

What's the most important thing to remember with trenchless installations?

You have options with pipe material and installation methods. Thompson Pipe Group provides the widest range of precast, pressure and trenchless pipe solutions in North America, plus industry-leading engineering and logistics.



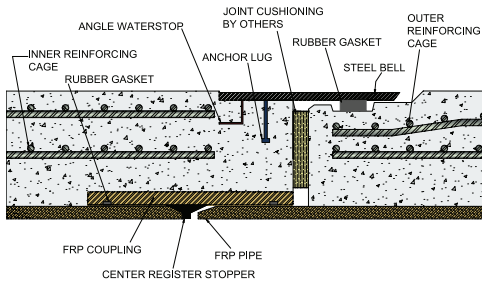
trenchless@thompsonpipegroup.com
www.ThompsonPipeGroup.com | 972-262-2600

TRENCHLESS PIPE OPTIONS



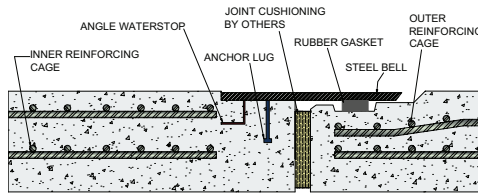
FLOWCRETE JACKING PIPE

- Wetcast
- Corrosion resistant
- Gravity & high pressure applications
- Straight or curved drives



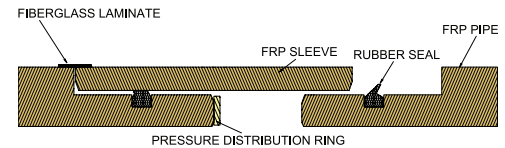
REINFORCED CONCRETE MICROTUNNELING PIPE

- Wetcast
- External steel bell for curved or straight drives
- Compatible with standard or hydraulic distribution rings



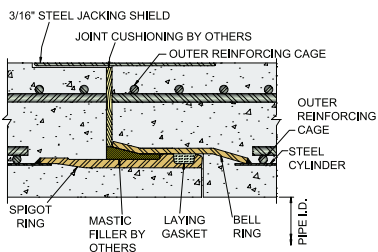
FIBERGLASS RPMP JACKING PIPE

- Single pass
- Corrosion resistant fiberglass jacking pipe
- Low pressure & gravity applications



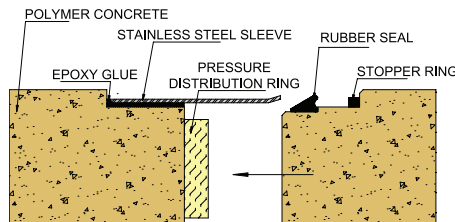
C300 JACKING PIPE

- Wetcast
- Straight or curved drives
- Embedded steel cylinder for high pressure applications
- Single pass
- Welded or gasketed joints



MEYER POLYMER CONCRETE JACKING PIPE

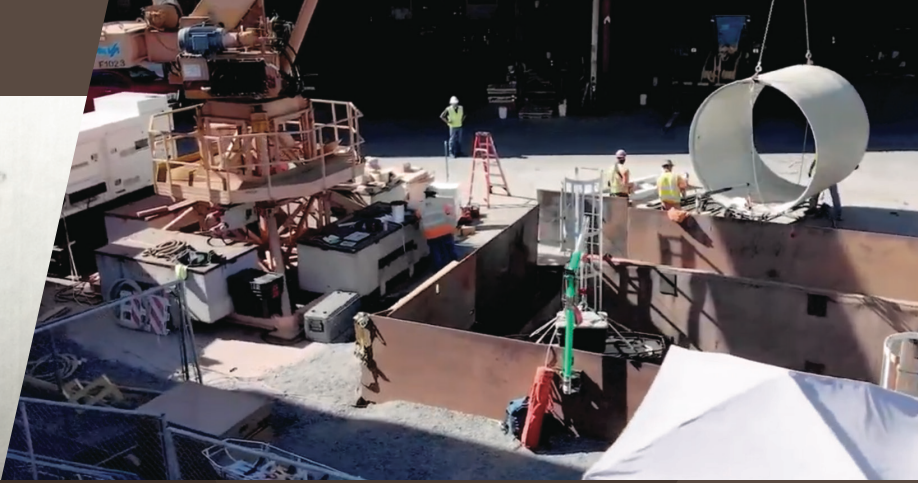
- Corrosive resistant
- Capable of withstanding high jacking loads
- Straight or curved drives
- Low pressure & gravity applications



MISCELLANEOUS

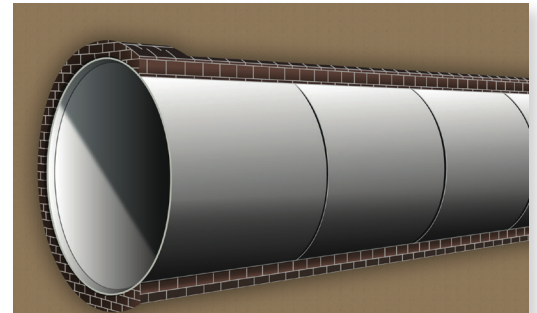
- Tunnel liner segments
- Shaft riser pipes
- Intermediate jacking stations
- Steel casing pipe
- Precast concrete box for jacking

CUSTOM TRENCHLESS REHABILITATION



TRENCHLESS REHABILITATION FACTS

- This method of repair reduces the headache that comes with digging open trenches in urban areas.
- More than a liner, Thompson Pipe Group products are structural solutions.
- With the right product, maintaining flow capacity is possible.
- Thompson Pipe Group engineers custom solutions with unique joints and restraint options for all applications.



AVAILABLE PRODUCTS

Steel

This application is available in either solid cans or split cans. Solid cans are typically manufactured by helical welding of steel coils, while split cans are rolled into the shape.

FRPM

Fiberglass reinforced polymer mortar pipe is a durable thin-walled pipe with a smooth bore. Depending on the host pipe material, TPG FRPM pipes may maintain flow efficiency. These lightweight pipes may be nested for transport and joint lengths are available in custom lengths.



During the turn of the 20th century, many municipalities installed non-round brick and mortar sewers to accommodate variable rates of flow. Over time corrosive sewer conditions have eroded the mortar. TPG FRPM is an efficient, low cost rehabilitation option.



trenchless@thompsonpipegroup.com
www.ThompsonPipeGroup.com | 972-262-2600

CUSTOM **TRENCHLESS** REHABILITATION PROJECTS



PHOENIX, ARIZONA **PIPE DIAMETER: STEEL 54"**

This project included more than 5,000 linear feet of water main. Solid can installations moved quickly; contractors only weld the joints. Split cans require joint and longitudinal welding.



EL PASO, TEXAS **PIPE DIAMETER: TPG FRPM 36"-54"**

Contractors used multiple installation methods including: hand tunneling, jack-and-bore, and internal carbon fiber wrapping. Additionally, they sliplined abandoned pipelines.



BAY PARK, NEW YORK **PIPE DIAMETER: TPG FRPM 66"**

Contractors relined seven miles of existing pipe located under a highway. This project includes a 100-year design life with an operating pressure of 100 psi and a surge pressure of 150 psi.



PORTLAND, OREGON **PIPE DIAMETER: TPG FRPM 108"**

The original design for relining 2,700 linear feet of a century old brick sewer called for steel liner plates, but the contractor located a shaft location and recommended TPG FRPM. The switch saved the owner money and time. Flow reduction was minimal thanks to a smooth bore and flush joints.



LOS ANGELES, CALIFORNIA **PIPE DIAMETER: TPG FRPM NON ROUND** **74"X65" AND 63"X56"**

The North Outfall Sewer carries wastewater to a water reclamation plant for treatment and release into the Santa Monica Bay. After a scan of the host pipe, two nonround FRPM shapes were developed and pushed into place during live flow.

