

CONCRETE PRESSURE PIPE AT A GLANCE

The Beaver Water District includes more than 200,000 LF of prestressed concrete cylinder pipe manufactured in Grand Prairie, Texas.



Beaver Water District

BEDDING AND BACKFILL

RIGID VS. FLEXIBLE PIPE INSTALLATION

The total cost of a project includes more than the pipe. Importing bedding and backfill increases the expense. Concrete pressure pipe is rigid and for this project could be installed with native materials.



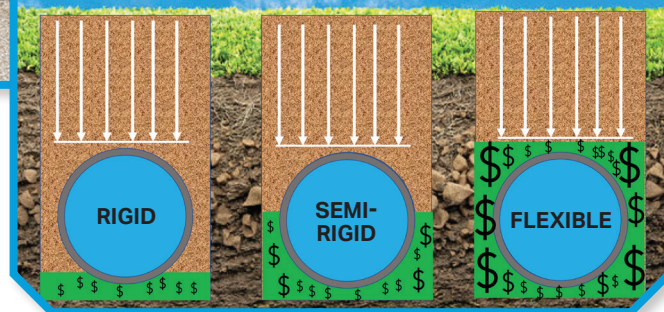
JOINT RESTRAINT

Concrete pressure pipe offers ease of installation. A Snap Ring®, is a one-bolt tightening system and a harness clamp has two.



Snap Ring® – Harness Clamp – Standard Joint

PIPE DESIGN



Megalugs require numerous bolts.



CORROSION

Concrete pressure pipe does not require any supplemental cathodic protection. Other pipe materials may require polyethylene encasement and/or cathodic protection.



Contractors wrap baggies around a ductile iron pipe.

REAL-WORLD EXAMPLES

ERIE COUNTY, NEW YORK

Pipe: 3,100 LF of 36" Prestressed Concrete Cylinder Pipe

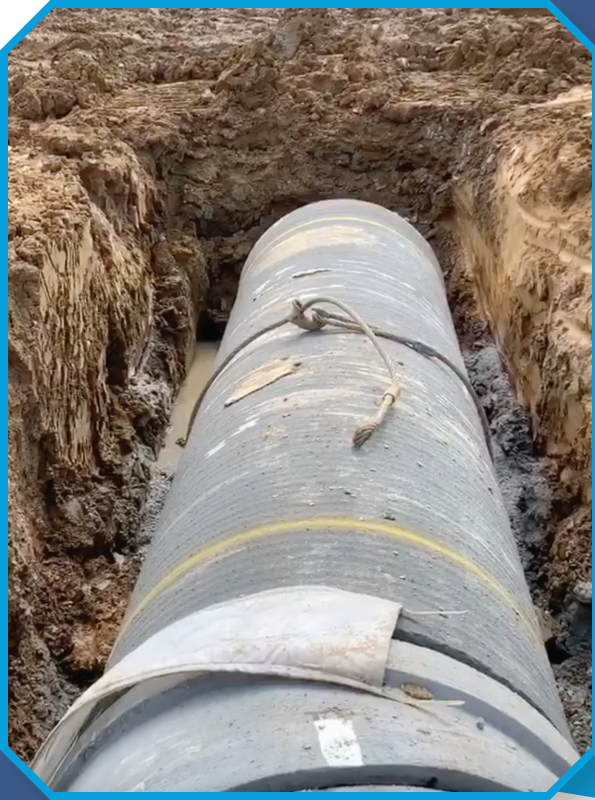
Why PCCP: Speed of installation, corrosion resistance, affordability

Project overview: Corrosive soils, a five-lane highway, and overhead power lines meant multiple considerations from the ground up.

"Double bagging and adding cathodic protection of thick ductile iron was too costly."

*– Robert Klavoon, P.E., of Wendel Engineering
Williamsville, New York.*





LOUISVILLE, KENTUCKY

Pipe: 1,000 LF 42"-60" PCCP

Why PCCP: Joint options, speed of installation, corrosion resistance, affordability

Project overview: The owner reviewed PCCP and ductile iron for this project. Thompson Pipe Group concrete pressure pipe was selected.

ADDITIONAL RESOURCES

Scan the QR code for more concrete pressure pipe information.



ThompsonPipeGroup.com

1003 MacArthur Blvd. – Grand Prairie, TX 75050 – 972-262-3600