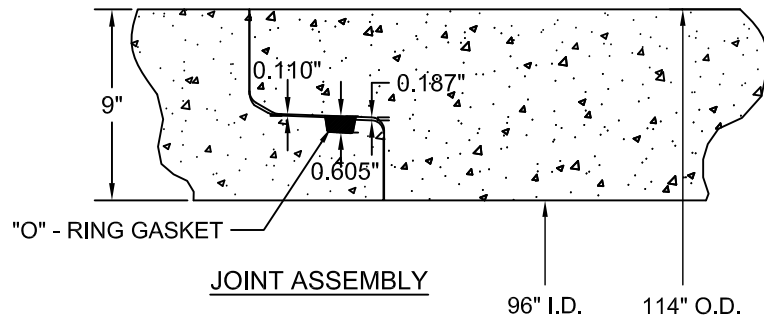


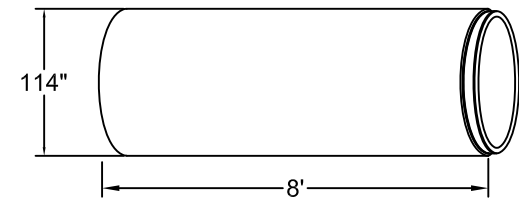
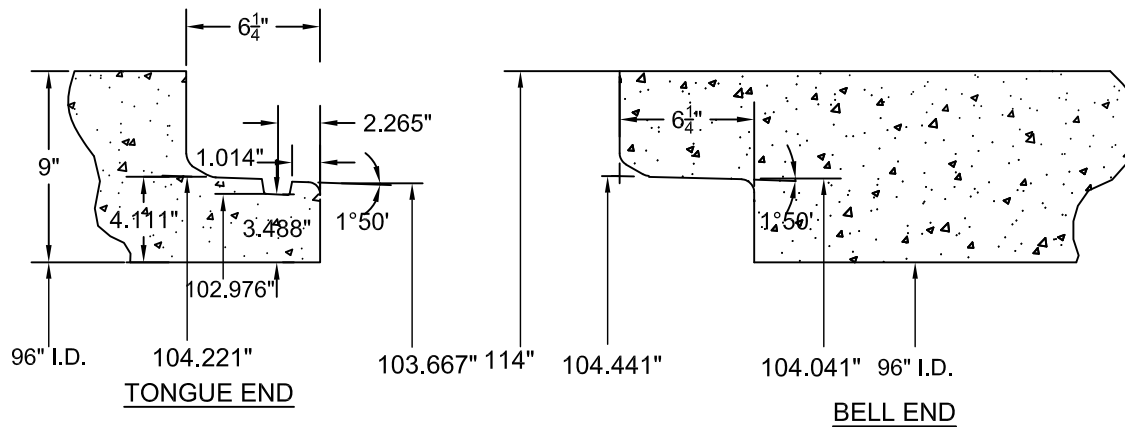
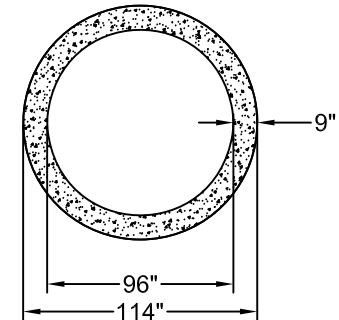
JOINT DETAIL



CORD DIA. = 1"

VOLUME = 3363cc

"O" RING GASKET



- LBS / 8' JNT = 25,440
 - LBS / 4' JNT = 12,720
 - LBS / LF = 3,180
- SHIPPING INFO. / FULL TRUCKLOAD (8' JOINTS) :
- JOINTS = 2
 - LF = 16
 - WEIGHT = 50,880 LBS PAYLOAD

NOTES:

1. WATER TIGHT JOINTS MADE IN ACCORDANCE WITH ASTM C76/C443/C361 & C655, GREENBOOK S 207-2 AND CALTRANS S 65 REQUIREMENTS.
2. LAYING LENGTHS 8' & 4' AS REQUIRED.
3. ALL CONCRETE USED IN THE MANUFACTURE OF RCP PRODUCTS CONTAINS TYPE II/V CEMENT PORTLAND CEMENT CONFORMING TO ASTM C-150.
4. AVERAGE JOINT GAP IS 0.04" (1/2").
5. STEEL REINFORCEMENT NOT SHOWN.
6. ALL DIMENSIONS SUBJECT TO ALLOWABLE SPECIFICATION TOLERANCES AND PARAMETERS.
7. BEVEL PIPE FOR 45 RADIUS MINIMUM.



3011 NORTH LAUREL AVE. RIALTO, CA 92377

JOB NAME: STANDARD PRODUCT

LOCATION: TBD

96" REINFORCED CONCRETE PIPE / CONFINED "O"-RING JOINT
STANDARD DRAWING FOR DRYCAST

DRAWN BY
FB

DRAWING NUMBER

CHECKED BY
KB

ORING_96inRCP_07242012

PART NO.
09600080000R000

DRAWING SCALE (UNO)
N.T.S.

DATE
10/14/2016

SHEET
1 OF 1