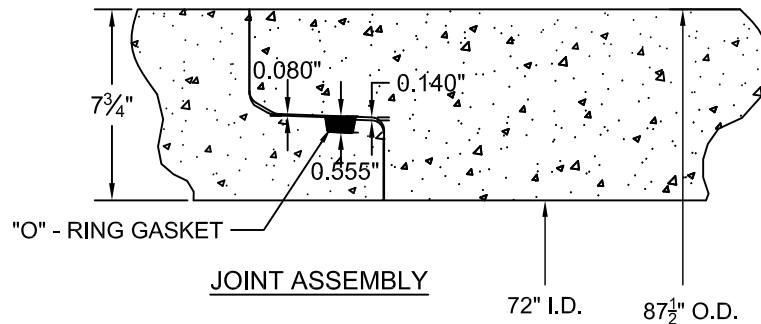


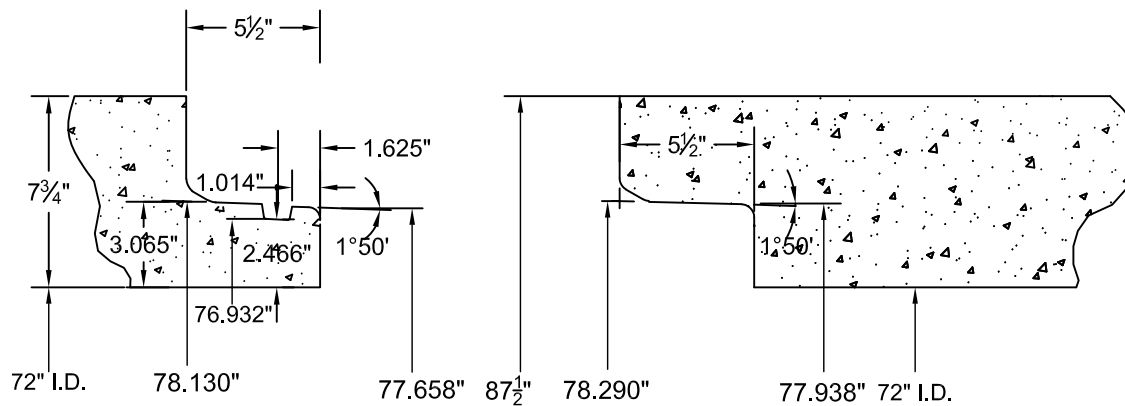
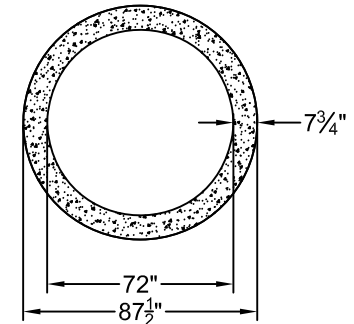
JOINT DETAIL



CORD DIA. = 19/16"

VOLUME = 2173cc

"O" RING GASKET



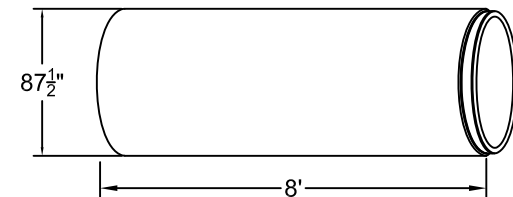
TONGUE END

BELL END

NOTES:

1. WATER TIGHT JOINTS MADE IN ACCORDANCE WITH ASTM C76/C443/C361 & C655, GREENBOOK S 207-2 AND CALTRANS S 65 REQUIREMENTS.
2. LAYING LENGTHS 8' & 4' AS REQUIRED.
3. ALL CONCRETE USED IN THE MANUFACTURE OF RCP PRODUCTS CONTAINS TYPE II/V CEMENT PORTLAND CEMENT CONFORMING TO ASTM C-150.

4. AVERAGE JOINT GAP IS 0.04" (1/2").
5. STEEL REINFORCEMENT NOT SHOWN.
6. ALL DIMENSIONS SUBJECT TO ALLOWABLE SPECIFICATION TOLERANCES AND PARAMETERS.
7. BEVEL PIPE FOR 45 RADIUS MINIMUM.



- LBS / 8' JNT = 16,280
 - LBS / 4' JNT = 8,140
 - LBS / LF = 2,035
- SHIPPING INFO. / FULL TRUCKLOAD (8' JOINTS) :
- JOINTS = 3
 - LF = 24
 - WEIGHT = 48,840 LBS PAYLOAD



3011 NORTH LAUREL AVE. RIALTO, CA 92377

JOB NAME: STANDARD PRODUCT

LOCATION: TBD

72" REINFORCED CONCRETE PIPE / CONFINED "O"-RING JOINT

STANDARD DRAWING FOR DRYCAST

DRAWN BY
FB

DRAWING NUMBER

CHECKED BY
KB

ORING_72inRCP_07242012

PART NO.
07200080000R000

DATE
10/14/2016

DRAWING SCALE (UNO)

N.T.S.

SHEET
1 OF 1