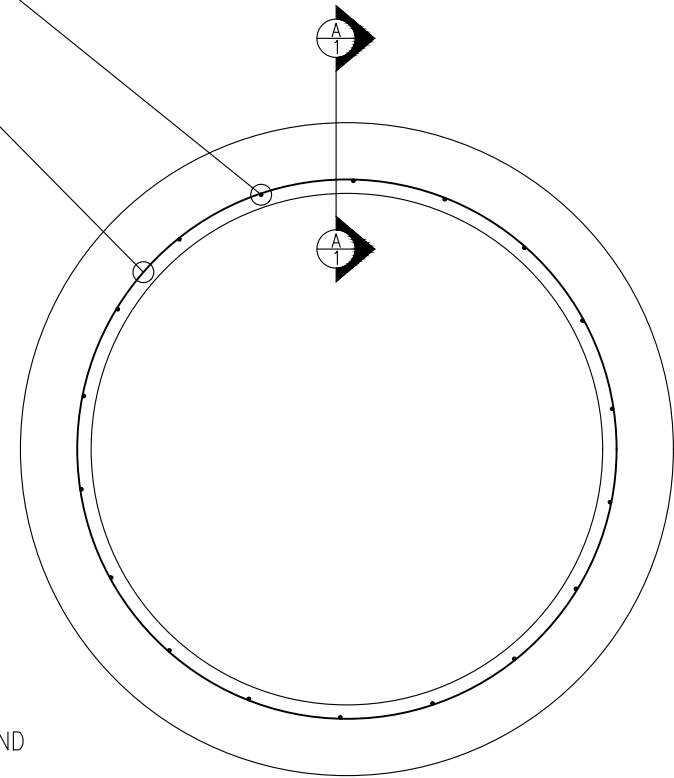


SECTION A-A THROUGH PIPE JOINT



SECTION THROUGH PIPE BARREL

NOTES:

1. PIPE MADE IN ACCORDANCE WITH ASTM C76/ C655, GREENBOOK SECTION 207-2 AND CALTRANS S65 REQUIREMENTS.
2. ALL CONCRETE USED IN THE MANUFACTURE OF RCP PRODUCTS CONTAINS TYPE II/V CEMENT PORTLAND CEMENT CONFORMING TO ASTM C-150.
3. ALTERNATIVE STEEL SIZE AND SPACING COMBINATIONS PRODUCING THE REQUIRED AREA MAY BE USED.
4. APPROX. PIPE WEIGHT = 278 LBS/LF. OR 2,224 LBS./8' JOINT (1.1 TONS)
5. LAYING LENGTH IS 8'/4' AS REQUIRED.
6. FOR ADDITIONAL INFORMATION NOT SHOWN CONTACT THOMPSON PIPE GROUP PRODUCT REPRESENTATIVE.
7. SEE PIPE SPECIFICATIONS SHEET FOR FURTHER DETAILS.



3011 NORTH LAUREL AVE. RIALTO, CA 92377

JOB NAME: STANDARD PRODUCT

LOCATION: TBD

24"Ø T&G PIPE JOINT DETAIL WITH SINGLE CAGE REINFORCEMENT

DRAWN BY
F. BARRALAGA

CHECKED BY
GC

PART NO.
0242008015C0000

DRAWING SCALE (UNO)
N.T.S.


DATE
3/29/2017

DRAWING NUMBER

TG24SC

SHEET
1 OF 2

Pipe Specifications

Pipe Type / Size	24"Ø T&G PIPE		
Joint Drawing Number	TG24SC		
Pipe Class / D-Load	TYPE IV / 2000D		
	Concrete Data		
Minimum Concrete Strength	5,000 psi		
Inner Reinforcement Concrete Cover	1 ½ in (nominal).		
Outer Reinforcement Concrete Cover	N/A		
	Steel Requirements		
Cage	Single / Inner Circular Reinforcement	Outer Circular Reinforcement	
Type of Mesh (ASTM A1064)	D5.3 @ 2" SPACING		
Required Cross-Sectional Area of Mesh	.27 in ² /ft	N/A in ² / ft	
Cross-Sectional Area of Mesh Furnished	.318 in ² / ft.	N/A in ² / ft	
Shear Steel			
Size and spacing of reinforcement may vary but required steel areas will be met.			
Checked By: _____, Date: ____ / ____ / ____	Approved By: _____, Date: ____ / ____ / ____		
	JOB NAME: STANDARD PRODUCT	24"Ø T&G PIPE JOINT DETAIL WITH SINGLE CAGE REINFORCEMENT	
	LOCATION: TBD	<div style="display: flex; justify-content: space-between;"> <div> <small>DRAWN BY</small> F. BARRALAGA <small>DRAWING NUMBER</small> </div> <div> <small>CHECKED BY</small> GC </div> <div> <small>PART NO.</small> 0242008015C0000 </div> <div> <small>DATE</small> 3/29/2017 </div> </div>	
3011 NORTH LAUREL AVE. RIALTO, CA 92377		TG24SC	
		<small>DRAWING SCALE (UNO)</small> N.T.S. <small>SHEET</small> 2 OF 2	